

scanning accuracy
0.015 mm

 EVIXSCAN 3D



 EVIXSCAN 3D

Dentica

Perfect solution for dental labs and technicians

eviXscan 3D Dentica is a dedicated solution for dental prosthetist.

The scanner is equipped with software for design of all kinds of dental models, see dies, find impressions and verticulator, ensuring accuracy and reliability.

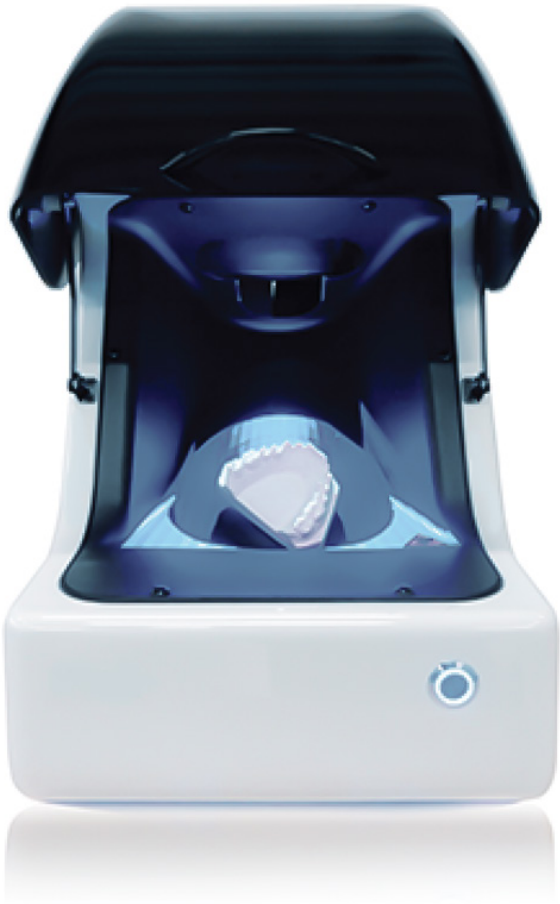
- Cameras: 2 x 1.3 Mpix
- Accuracy: **0.015 mm**
- Light-source: **R/G/B LED**
- Optics: auto-calibration
- Plug&Play: PC integrated
- Import/Export of standard formats: STL, PLY, OBJ, ASC
- Perpetual license with no additional fee

 *designed by*
evatronix

Evatronix SA

Wiktora Przybyły 2, 43-300 Bielsko-Biała, Poland

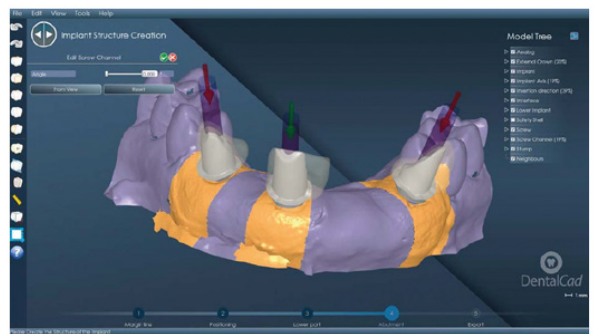
www.evatronix.com · www.evixscan3d.com · scanners3d@evatronix.com · +48 33 499 59 11



DentalCAD

The first software for dental modeling designed to support your expertise.

- **Intuitive** - User friendly workflow and modern interface
- **All in One** - Just one license for complete functional coverage
- **CAM** - Direct integration to manage your CAD and CAM system



Light-source	R/G/B LED
Cameras	2 x 1.3 Mpix
Accuracy	0.015 mm
Scanning time	3 seconds
Measuring ranges	100 x 80 x 80 mm
Points density	156 pt/mm ²
Software	Dentica Suite + DentalCAD
Export formats	stl, ply, obj, asc
Computer requirements	Computer included
Computer connection	