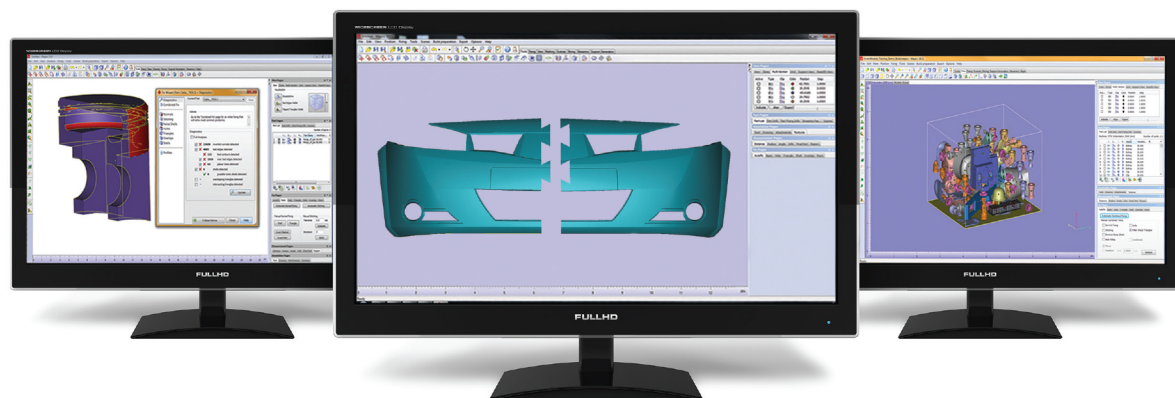


Materialise Magics

The Most Powerful 3D Printing Software

Materialise Magics is a smart, versatile data preparation software for 3D Printing and Additive Manufacturing equipped with a customizable, intuitive user interface. This industry-leading software efficiently guides you through every step of your Additive Manufacturing (AM) or 3D printing workflow:



“We receive files from outside sources that need substantial CAD time to create a watertight model. Materialise Magics allows us to do this in half the time.”

Paul Bates, Director,
Advanced Process Engineering
and Gary Rabinovitz,
RP Manager Reebok International
Ltd., Canton, Massachusetts,
United States

1. Import Nearly All File Formats

With Magics, you can import nearly all file formats and native color information, and stay in control of your original data.

2. Repair and Prepare Files

The STL editor in Materialise Magics allows you to correct problems, as well as create watertight data and shortcuts to suit your AM workflow, all in a user-friendly interface. STL file repair includes fixing of flipped triangles, bad edges, holes and other defects.

3. Enhance and Edit Data

With Magics, you can also take your designs to the next level: add logos, serial numbers, and hollow parts; apply textures; create lattice structures; and perform Boolean operations and advanced cuts.

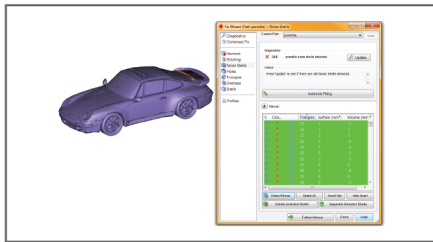
4. Prepare the Platform

Materialise Magics has the tools you need to duplicate parts, orient them in an ideal way, generate support for metal and stereolithography parts, efficiently nest your laser sintering parts and create no-build zones.

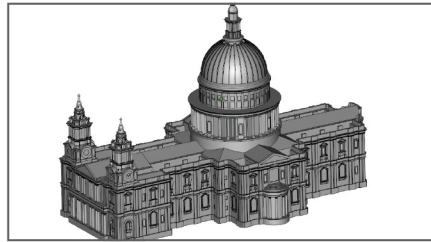
5. Print Better Parts

Materialise Magics ensures you print only the best parts. It allows you to view slices, detect collisions, save platforms, and generate useful reports.

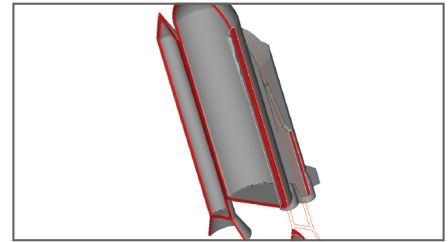
All of These Features and More to Guide You Through Your Workflow



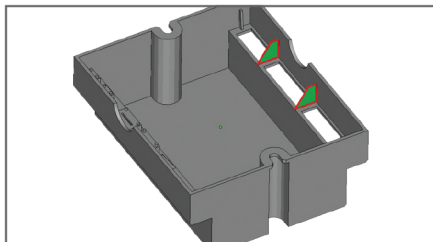
Fix errors quickly with the fixing wizard



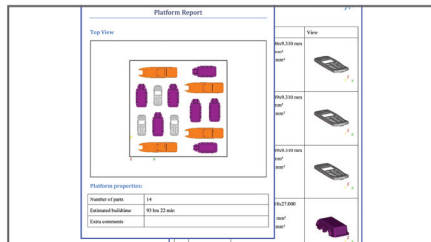
Fix complex parts easily with ShrinkWrap



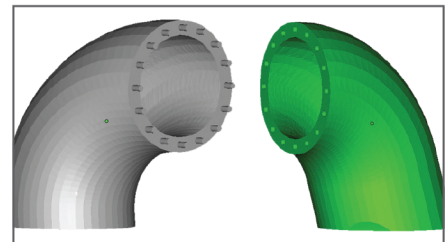
Hollow parts to save on printing time and materials



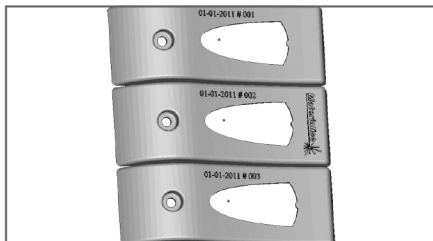
Avoid errors with wall thickness analysis



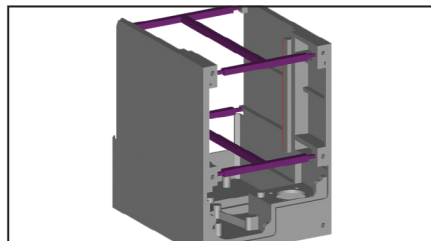
Generate customizable reports



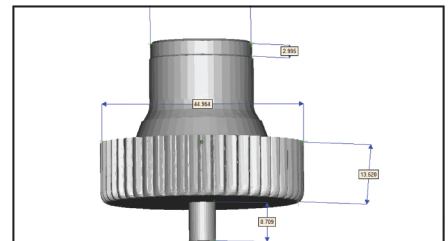
Perform advanced cuts and automatically add connector pins



Add unique labels to each part



Avoid deformation by adding props



Check the dimensions of your parts

Worldwide User Base

The world's most advanced service bureaus, as well as AM departments in top automotive, consumer electronics and aerospace companies, depend on Materialise Magics to carve out a clear competitive advantage for them in today's tough business environment. Materialise Magics doesn't only meet AM industry standards, it also fits 3D Printing into the demanding standards of each specific industry, allowing new business models to flourish. We take great pride in seeing our customers excel.

Trusted Partner of Additive Manufacturing Machine Manufacturers

Leading AM machine manufacturers and vendors all over the world package Materialise Magics software in combination with their machines. Others have sub-contracted portions of their software to Materialise. Materialise Magics is the result of domain expertise and specialized know-how and remains the standard choice for 3D printing professionals.

Continuous Innovation & Progress

The objective for each new Materialise Magics version is increased user-friendliness, a boost in efficiency, and greater potential to cut costs. In our ongoing effort to offer the best possible software available, a dedicated team focuses on improving Magics' functionality. Materialise Magics users with a maintenance contract can benefit each year of an upgrade with the release of new innovative and updated features, as well as excellent technical support.

Materialise, the Materialise logo and Materialise Magics are trademarks of Materialise NV.

For more information about Magics, contact us at: magics@materialise.com or visit our website software.materialise.com

